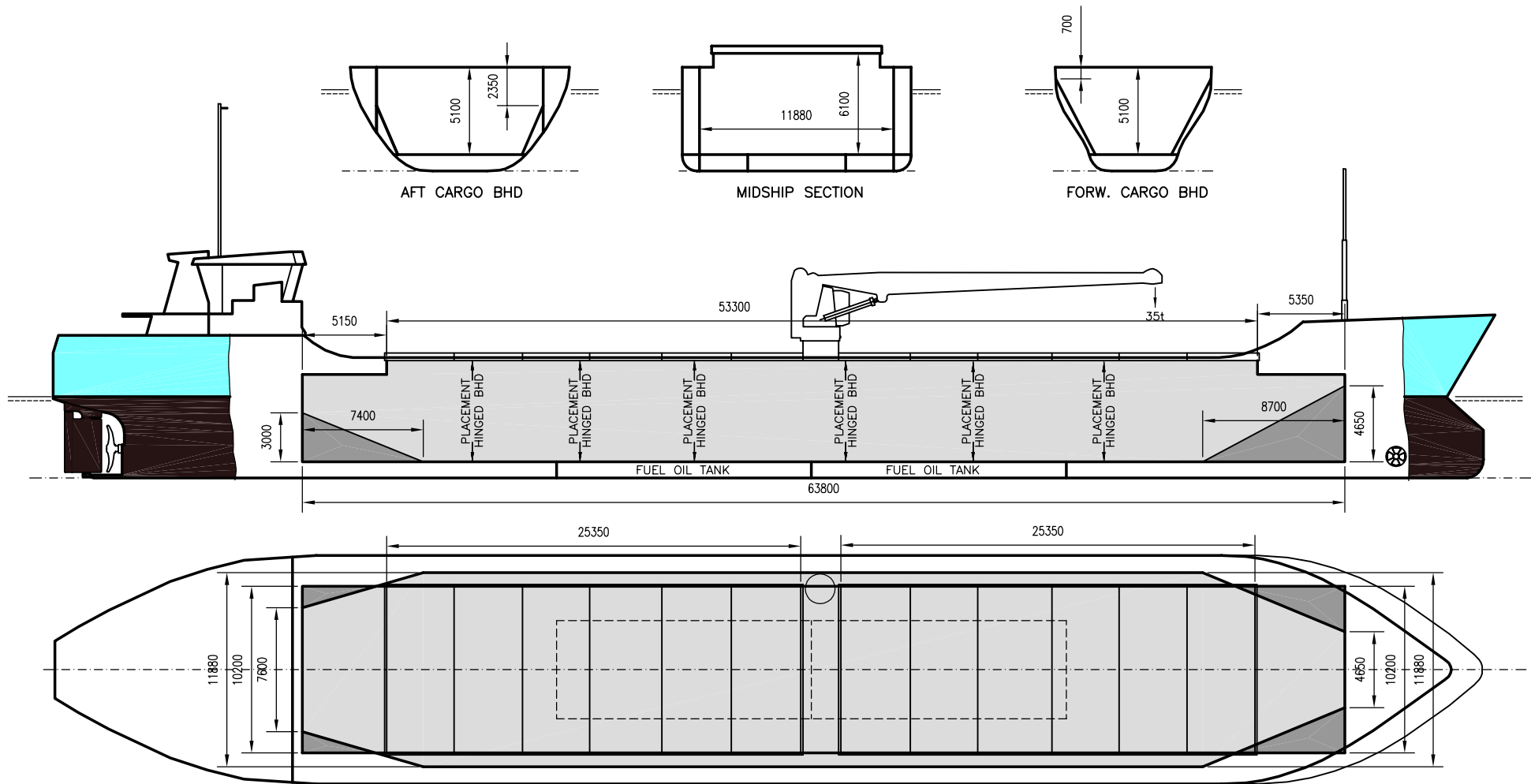


TINNO

DEADWEIGHT GROUP
 3500 dwt





TINNO

If not otherwise specified :
Dist/Dim in meters
Weights in m.tons

DWT GROUP 3500
IMO NO 8908806
CALL SIGN C6QJ3
BUILD 1991
FLAG Bahamas

Builders **Bodewes Scheepswerken BV**
Classification LR / + 100 A1+ LMC UMS + ICE 1D
Length oa 88.15
Breadth mld 14.00
Depth mld 6.35
Draft summer 5.00
Deadweight summer draft 3504
Draft winter 4.90
Deadweight winter draft 3400
Gross tonnage 1986
Net tonnage 1246
Immersion(load draft) TPC 10.70
Mean draft of ship in heavy ballast 2.88
Distance from forward end of No.1 Hatch to aft end of last hatch 53.50
Hatch type Pontoon type
Container (TEU) capacity Hold / Deck 64 / 39

Hatch details:

- a : Distance from waterline fully ballasted to top of hatch coamings
b : Distance from waterline fully loaded to top of hatch coamings
c : Distance from tank top to top of hatch coamings
d : Max permissible loading on hatch covers
e : Distance from ship's rail to inside hatch coamings
f : Height of hatch coamings
g : Hatch opening
h : No. of Loadingholes on hatchcovers X diameter in mm

Remarks :

Vessel designed for NAABSA condition.
Crane located on port side, midship. SWL 3-17m 35mt, 17-20m 25mt.

Max permissible load on deck, mt/sqm 2.30
Max permissible load on tanktop, mt/sqm 12.00
Max air draft - 1 27.12
Max air draft - 2 12.22
Distance from keel to top antenna -1 30.00
Distance from keel to top antenna -2 15.10
Water ballast capacity 1 210.00
Fuel main engine - type/capa.(cbm)/cons. MGO / 204.00 / 4.90
Fuel aux engine - type/capa.(cbm)/cons. MGO / - / 0.30
Speed service, knots 10.50
Cargo gear 1 x 35 mt at 17m outreach Yes
Bow thruster 240 KW Yes
Boxed No
Double skin Yes
Open hatch No
Rhine fitted Yes
Ammonium Nitrate fitted No
FeSi fitted Yes

Htch#	a	b	c	d	e	f	g	h	Hold#	Bale		Grain		Hold dimensions	Compartm :		Communication :		Equipment
										cbm	cbft	cbm	cbft		#	cbm	Type	No	
1	4.30	2.18	6.10	1.75	1.90	0.83	25.35 x 10.20	0	1	4237	149 630	4262	150 513	63.90 x 11.70 x 5.10	a	456	Telex 1	430 875 210	Gsm
2	4.30	2.18	6.10	1.75	1.90	0.83	25.35 x 10.20	0							b	278	Telex 2	430 875 220	Inmarsat
															c	250	Tlph 1	934 65 476	Gsm
															d	345	Tlph 2	934 65 475	Gsm
															e	254	Fax	934 70 738	Gsm
															f	229	Email	tinno@gtw.dualog.com	
															g	276			