

M/T RAMONA



Oil and chemical tanker

Shipname	Ramona
Call sign	SFGZ
Flag	Swedish Flag
Port of register	Donsö
IMO no	9271896
MMSI no	266 129 000
Suez ID no	29636
Registered owner:	Rederi AB Älvtank
Managing owner / Invoice address	Älvtank HB, Box 47, S-43082 Donso, Sweden
Chartering / commercial operation	Nordtank Shipping A/S, Lindevej 16, DK-4300 Holbaek, Denmark
Built	2004 Shanghai Edward Shipbuilding, H130
Class	Bureau Veritas, 1+Hull, +Mach, Oil/Chem tanker, IMO type 2, ESP, Unrestricted navigation, Ice class 1A, Autums, Mon shaft, Star Hull, Star Mach
Class reg no	03737P
Loa	143,97 m
Breadth	21,82 m
Depth	12,50 m
Draft Summer	9,18 m
Max air draft	27,0 m
Fresh water allowance	0,199 m
DWT Summer	15999
GRT	11548
NRT	5290
Reduced GRT	9494 (SBT 2054)
Cargo capacity (98%)	18822 cbm
Segregations	14, possible to discharge 7 at same time
Cargo pumps	Framo 12 * SD 150, 330 cbm/h
Sloptank pumps	Framo 2 * SD 100, 100 cbm/h
Cargo monitoring	SAAB Rosemount
Cargo tank coating	International TCA
Nitrogen plant	Unitor 1200 cbm/h

Tank capacity at 100 %

No 1 S / P	1279 / 1263 cbm
No 2 S / P	1381 / 1382 cbm
No 3 S / P	1645 / 1661 cbm
No 4 S / P	1903 / 1899 cbm
No 5 S / P	1660 / 1644 cbm
No 6 S / P	1565 / 1580 cbm
Slop S / P	191 / 191 cbm
Total	19244 cbm

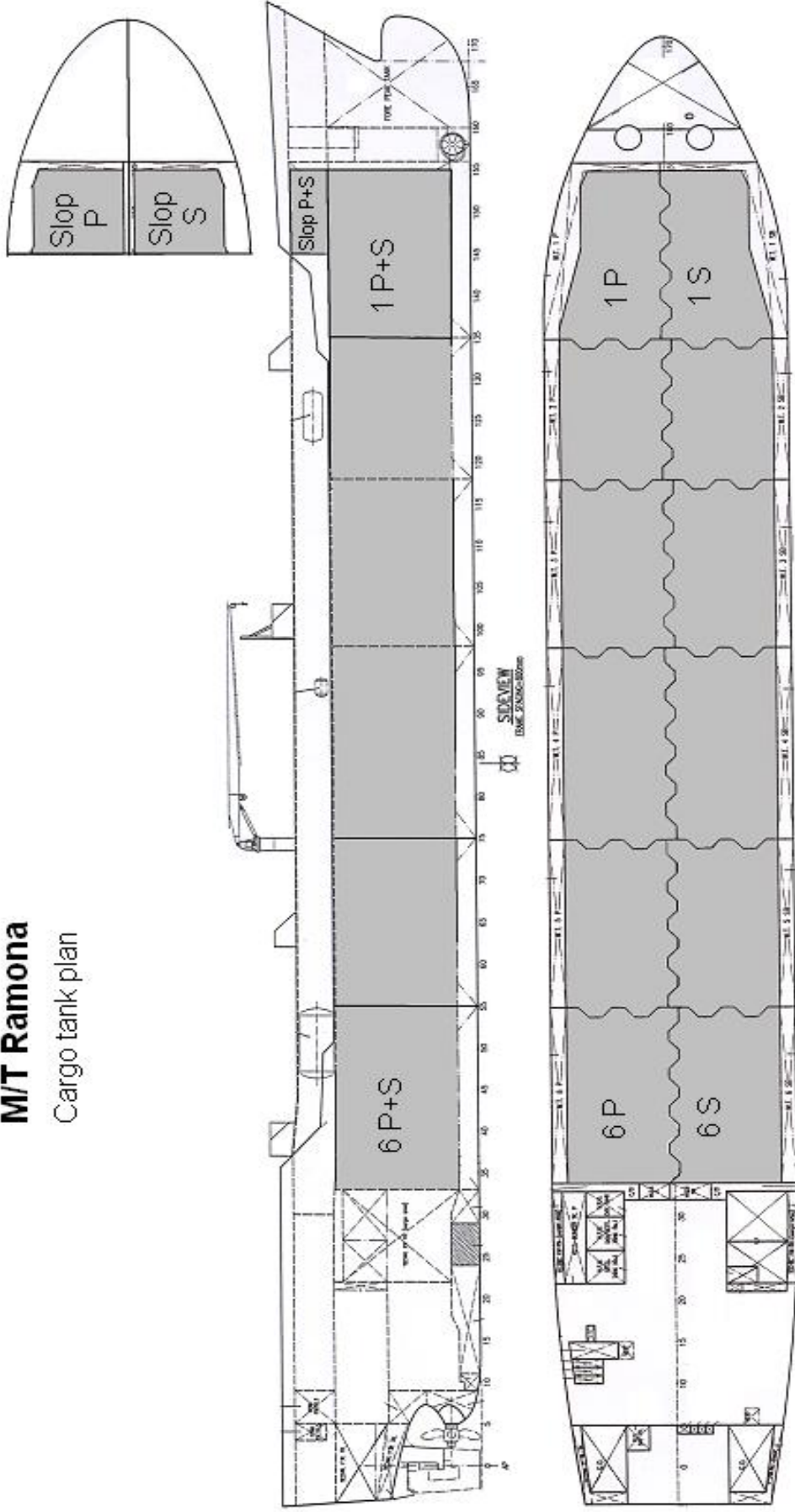
Ballast capacity	7032 cbm
Ballast pumps	Framo 2 * 500 cbm/h
Deck drain tank	42 cbm
HFO capacity	694 cbm
GO capacity	116 cbm
FW drinking	52 cbm
FW technical	366 cbm

Main engine	MAK 7M43, 6190 kW
Propeller plant	CCP, Rolls-Royce Kamewa
Gear	Renk
Speed	> 15 knots
Consumption	25 t / 24 h
Bow thruster	Brunvoll, Retractable azimuth, 850 kW

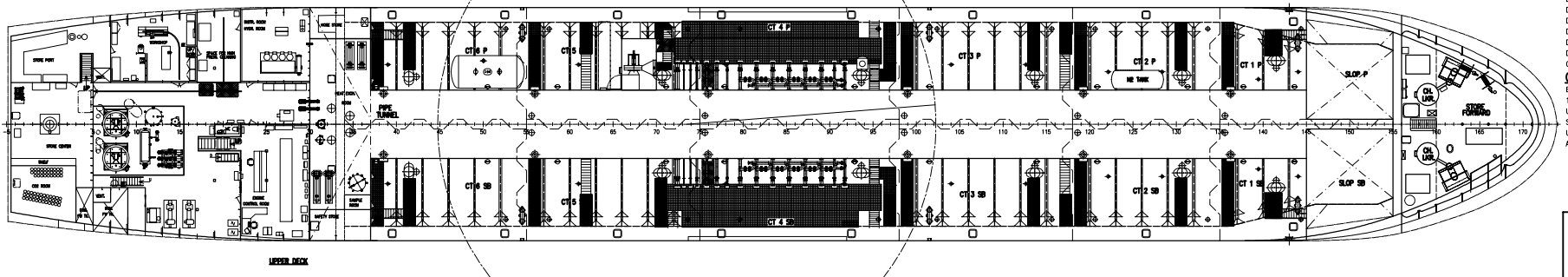
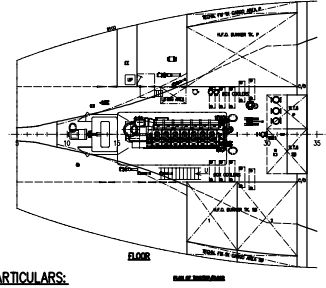
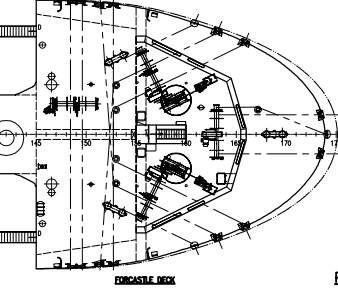
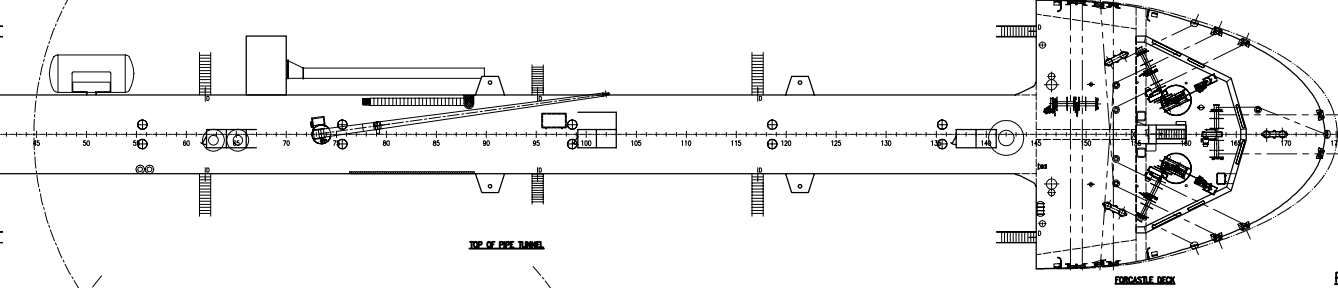
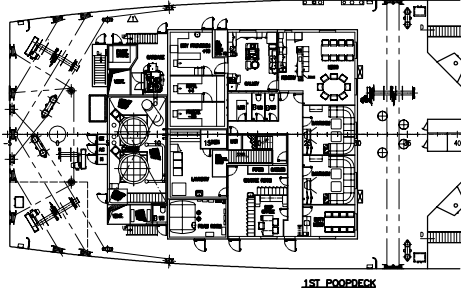
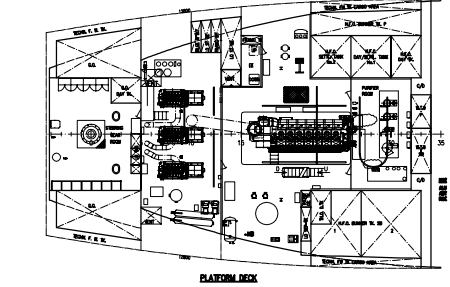
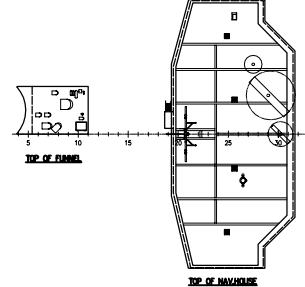
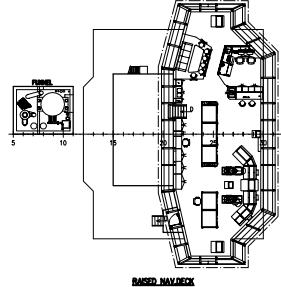
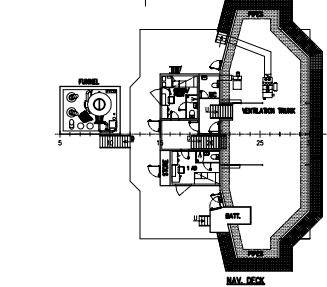
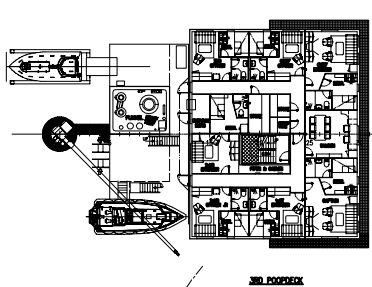
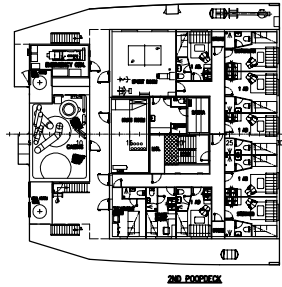
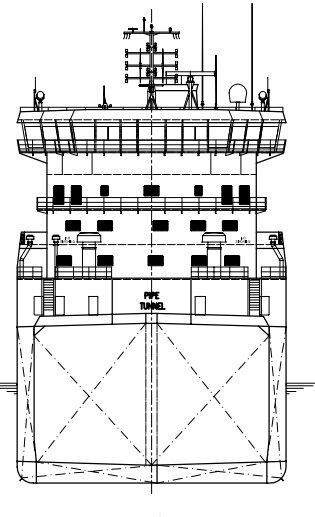
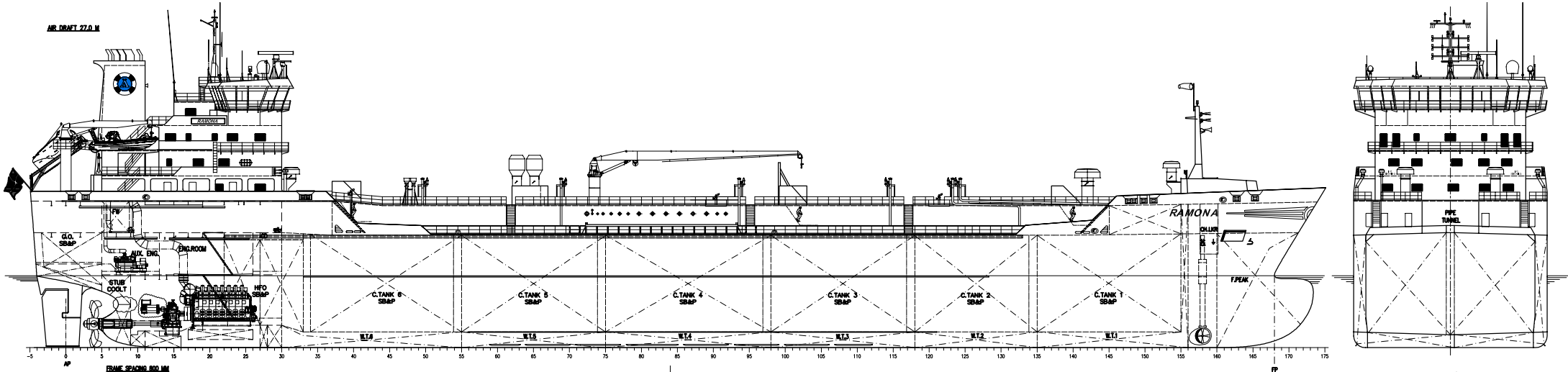
Shaft gen	ABB 1000 kW
Aux eng.	Volvo Penta D34 A MT 828 kW
Generators	Stamford HCM634J, 988 kVA
Engine alarm plant	Kongsberg
Thermal oil boilers	Gesab 2 * 2900 kW
Exhaust gas heater	Gesab 900 kW
Cargo heating	12 Deck heaters
Navigation equipment	Furuno
Life saving equipment	Norsafe
Deck machinery	Rauma Brattvaag

M/T Ramona

Cargo tank plan



MR DRAFT 27.0 M



PARTICULARS:

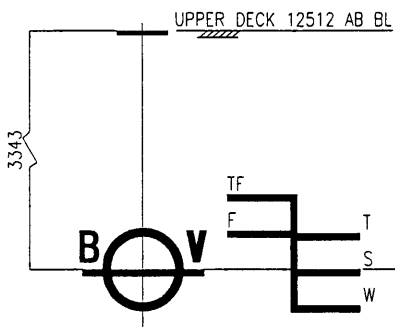
LENGTH OVER ALL	ABT. 144.0 M
LENGTH BETWEEN P.P.	134.4 M
BREADTH MOLDED	21.5 M
DEPTH TO UPPER DECK	12.5 M
DRAUGHT DESIGN	9.00 M
DEADWEIGHT AT DESIGN DRAFT	ABT. 13200 TONNES
DRAUGHT SCANTLING	ABT. 9.00 M
DEADWEIGHT AT SCANTLING DRAFT	15999 TONNES
CARGO OIL CAPACITY	ABT. 19200 M3

CLASS

BERGMAN VERITAS
 1 - HULL, +MACH, OIL TANKER/CHEMICAL TANKER IMO TYPE 2, ESP.
 UNRESTRICTED NAVIGATION, ICE CLASS 1A, AUT.-UMS, MON-SHAFT,
 STAR-HULL, STAR-MACH, TO COMPLY WITH INNATERSURVEY AND SYS-NEG-1.
 US COAST GUARD REGULATIONS
 AUTHORITY: SVENSKA SJFARTSVERKET (SVA)

<p>RIKAB RIK AB RIK AB</p>	NO: 129/130 DATE: 011113 DRAWN: J.J. CHECKED: J.J. SCALE: 1:150
	PROD./ CHEM. TANKER 16200m3 / 15999 TDW
02204-102-01	1:150

LOADING SCALE



DRAUGHT IN METRES U.SIDE KEEL	DEADWIGHT IN TONNES A' 1000 KG			DISPLACEMENT TONNES IN SW	TONNES PER CM IN SW	MCT IN CM TONM IN SW	DRAUGHT IN METRES U.SIDE KEEL
	IN FRESH WATER δ = 1,000	IN BRACKISH WATER 1,005 1,015 1,020	IN SALT WATER δ = 1,025				
19.500			20000				
19.000			19500				
18.500			19000				
18.000			18500	24'00		280	10.0
17.500			18000		27.5		
17.000			17500				
16.500			17000				
16.000			16500	22000		270	
15.500			16000				
9.0	15000		15500				9.0
	14500		15000		27.0	260	
	14000		14500	20000			
	13500		14000				
	13000		13500			250	
8.0	12500		13000		26.5		8.0
	12000		12500	18000		240	
	11500		12000				
	11000		11500		26.0		
	10500		11000			230	
7.0	10000		10500	16000	25.5		7.0
	9500		10000			220	
	9000		9500				
	8500		9000		25.0	210	
6.0	8000		8500	14000			6.0
	7500		8000				
	7000		7500				
	6500		7000		24.5	200	
	6000		6500	12000			
	5500		6000				
5.0	5000		5500		24.0	190	5.0
	4500		5000				
	4000		4500	10000			
	3500		4000				
	3000		3500			180	
4.0	2500		3000		23.5		4.0
	2000		2500	8000			
	1500		2000				
	1000		1500				
	500		1000		23.0	170	
3.0	0		500	6000			3.0
	0		0				

LIGHT SHIP WEIGHT
5618 TONNES

DRAUGHT SCALE: 1:40

KEEL PLATE THICKNESS: 17 MM