



General

American Bureau of Shipping (ABS) ⚙️A1 self elevating unit.
IMO number 8769200

Dimensions

Length over all (ex. crane boom) 72.65 m
Beam maximum 39.62 m
Depth 5.46 m
Draft maximum 4.00 m
Draft empty 2.40 m
Deck load maximum of 10 tonnes/m²

Anchor system

4 point mooring system.
4 x 6 tonnes Flipper Delta anchor.
Anchor winch 4 x 100 tonnes pull on first layer.
Winch wires 900 m x 52 mm.

Jacking system

Number of legs 4 (square 2.20 x 2.20 m)
Leg length 52.35 m
Holding capacity 1550 tonnes/leg
Pre-load capacity 1550 tonnes/leg
Power diesel-hydraulic

Main crane

Type Manitowoc 888 Series II
Ringer crane
Capacity see Capacity Diagram pto
Main boom 125 - 325 ft (38.1 - 99.1 m)

Auxiliary crane

Type Ned Deck Marine (certified for man riding)
Capacity 3 tonnes at 15 m outreach



Power

Main generators	3 x 340 kW/ 440V 60 Hz
Emergency generator	1 x 340 kW/ 440V 60 Hz

Tank capacity

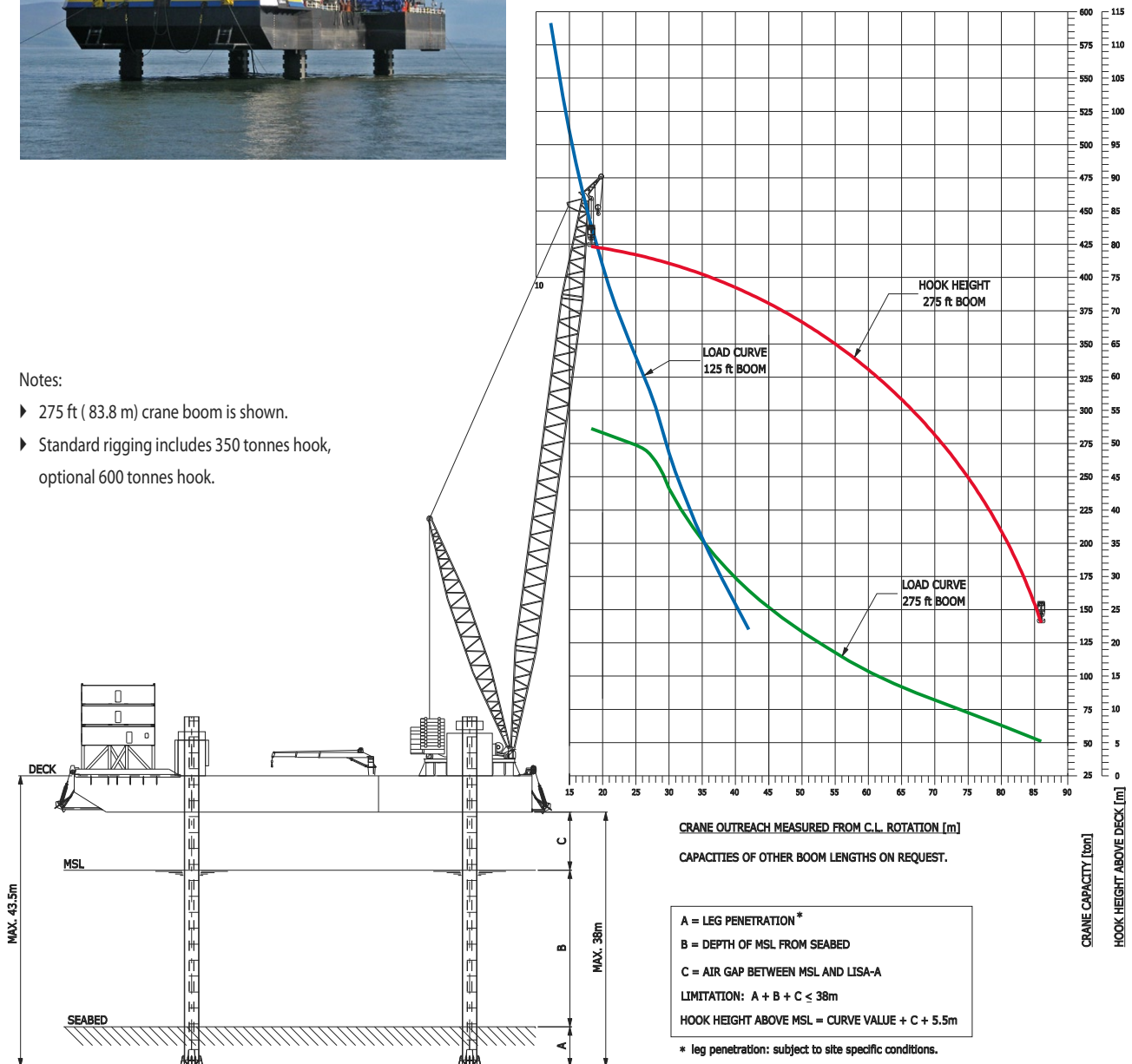
Fuel tank	105 m ³
Fresh water	226 m ³
Ballast pumps	2 x 500 m ³ /hr

Other specifications

Accommodation	40 persons (20 double cabins)
Free deck space	up to 1000 m ²
Platform payload	appr. 950 tonnes (subject to consumables and centre of gravity)

Notes:

- ▶ 275 ft (83.8 m) crane boom is shown.
- ▶ Standard rigging includes 350 tonnes hook, optional 600 tonnes hook.



CAPACITY DIAGRAM