



GENERAL

Type of Vessel: Multicat type vessel (Eurocarrier 2209)
 Builder: Neptune Marine BV
 Build Date, Place: 2007, The Netherlands
 Classification: Bureau Veritas I 3/3 Special Service/Multi Purpose - Coastal Area
 Certification: MCA Workboat Code Cat 2 (60 miles) 12 passengers

DIMENSIONS

Length O.A. 22m
 Beam O.A. 9m
 Depth at Sides 3m
 Draft Aft 1.8m

PERFORMANCE

Free Running Speed: 9 knots (approx)
 Bollard Pull: 15.0 t (approx)
 Deck Carrying Capacity 80t

PROPULSION SYSTEM

Main Engines: 2 x Caterpillar C18
 Total Power 1200hp (894Kw)@ 1800 rpm
 Marine Transmissions: 2 x Twin Disc MG516 DC 4.52:1
 Propulsion: 2 x 1350mm dia 4-blade fixed pitch propellers in Nozzles

AUXILIARY EQUIPMENT

Generator Sets John Deere 4045TF258 (keel cooled) - 68Kw
 John Deere 4045TF258 (radiator cooled) - 75Kw
 Fuel Transfer Pumps 40m3 per hr
 Water Transfer Pumps 40m3 per hr
 Electrical System: 24v DC and 220v shore supply

DECK EQUIPMENT

Hydraulic Crane: Heila 120-4SL - 120t/m (with 10t winch and r/c)
 Capacity [9.3t @ 12.11,] inc remote control
 Anchor Handling/towing winch: Hydrauision 50 tonnes
 Tugger winch: Hydrauision 10 tonnes
 Bow Roller / Stern Roller 820mm dia
 Towing Hook Mampaey
 Air Compressor 14 cuft/min
 Welding set TBA
 Burning Gear Oxy Acetylene
 Other Wooden deck protection, 2 push knees

TANK CAPACITIES

Fuel Oil 42.00m3
 Fresh Water 57.00m3
 Lube Oil TBA

ACCOMODATION

Wheelhouse with air conditioning seating for crew, large air conditioned galley / day room with sanitary space.
 Below deck 2 x 1 person cabins, 1 x 2 person cabin. Large workshop/store, washing machine and dryer.

NAVIGATION AND COMMUNICATION EQUIPMENT

Searchlight Sunbeam Searchlight 250W
 Kottter type Magnetic Compass / Furuno SC-50 Satellite Compass
 Compass
 Radar Furuno 1505 M111
 GPS Furuno GP-150D
 Echo Sounder Furuno FCV-585
 VHF Radio 2 x Sailor RT 5022DSC
 Handheld VHF 2 x Tron TR20
 Navtex Dual Channel NX700A
 Chart Plotter PC with Euronav electronic charts
 AIS Comar Class B AIS CSB200
 Satellite phone Sailor Iridium SC4000
 Phone: Motorola GSM phone
 Auto Pilot Radio Holland Seapilot 25
 SART Tron Sart 9ghz
 EPIRB Tron 40s 406mhz

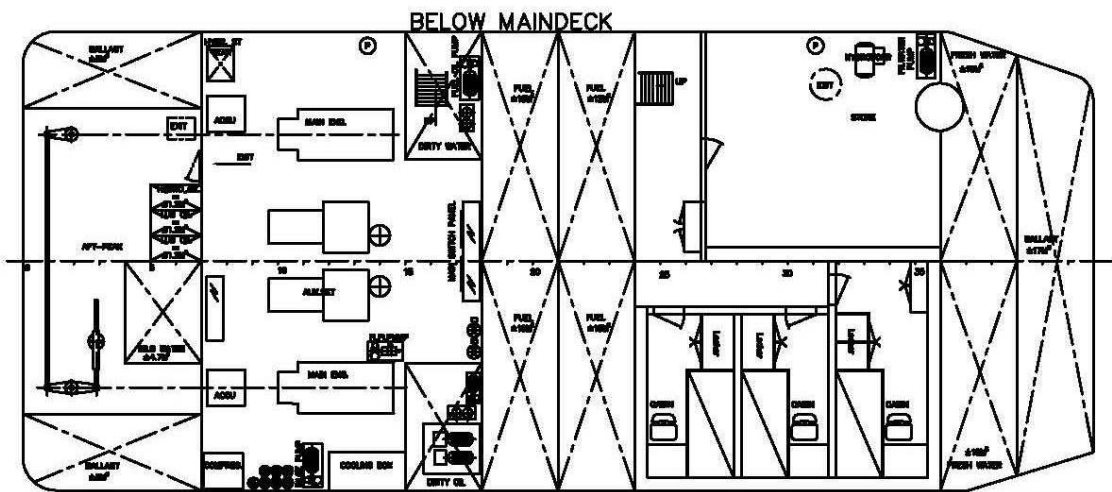
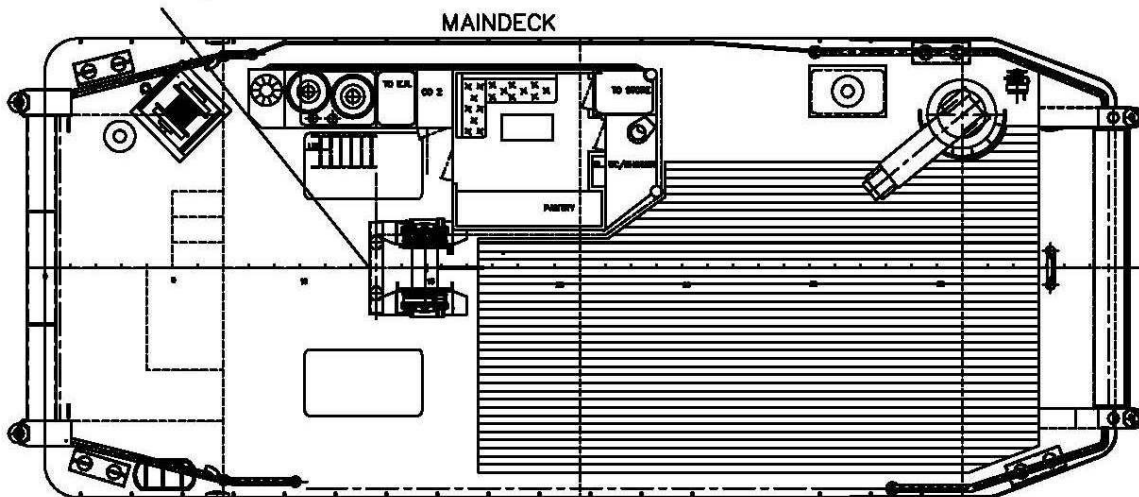
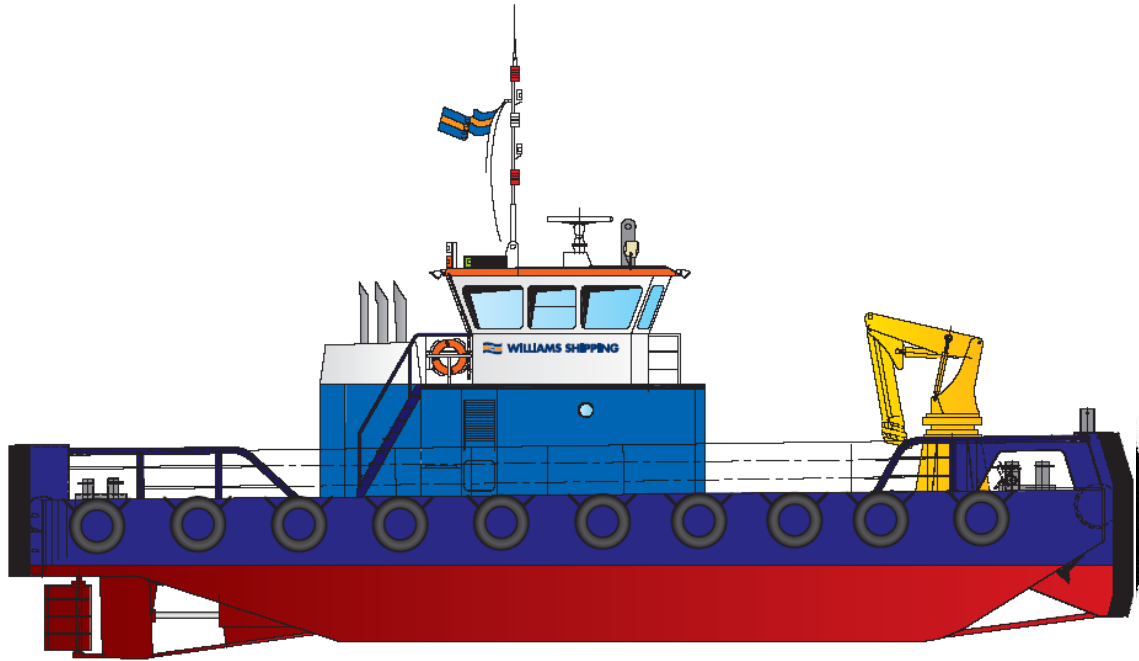
This specification is for guidance only. Whilst every care is taken in the preparation of this specification, please check details before making any decisions reliant upon them.



WILLIAMS

Williams Shipping Marine Ltd.
 Dock Gate 4, Southampton SO14 3GF UK
www.williams-shipping.co.uk
enquiries@williams-shipping.co.uk
 Telephone +44 (0)23 8023 7330

Williams Marine & Port Services Ltd
 Port of Pembroke, Pembroke SA72 6TD UK
www.wmps.co.uk
info@wmps.co.uk
 Telephone +44 (0)1646 684169



This drawing is for layout guidance only. Dimensions are approximate. Whilst every care is taken in the preparation of this drawing, please check all dimensions and equipment details before making any decisions reliant upon them.



WILLIAMS

Williams Shipping Marine Ltd.
 Dock Gate 4, Southampton SO14 3GF UK
www.williams-shipping.co.uk
enquiries@williams-shipping.co.uk
 Telephone +44 (0)23 8023 7330

Williams Marine & Port Services Ltd
 Port of Pembroke, Pembroke SA72 6TD UK
www.wmps.co.uk
info@wmps.co.uk
 Telephone +44 (0)1646 684169