



UGELSTAD

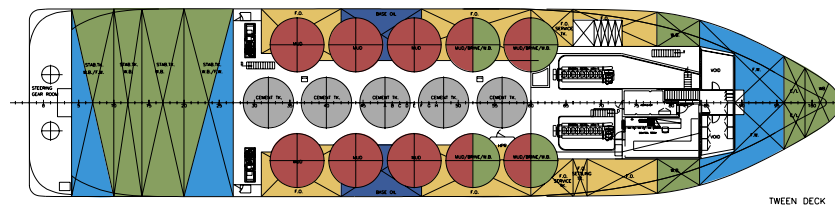
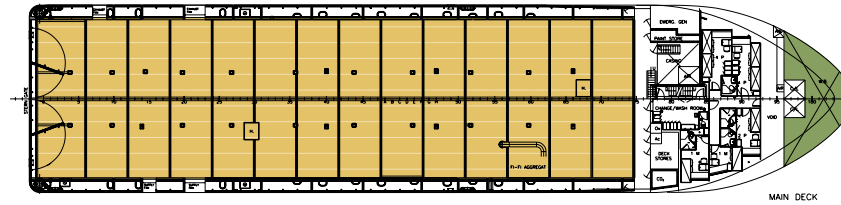
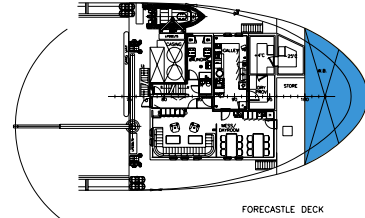
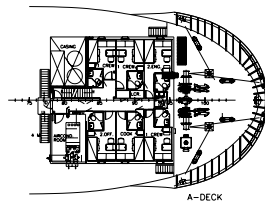
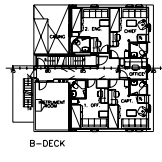
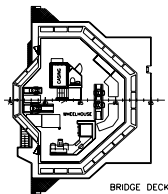
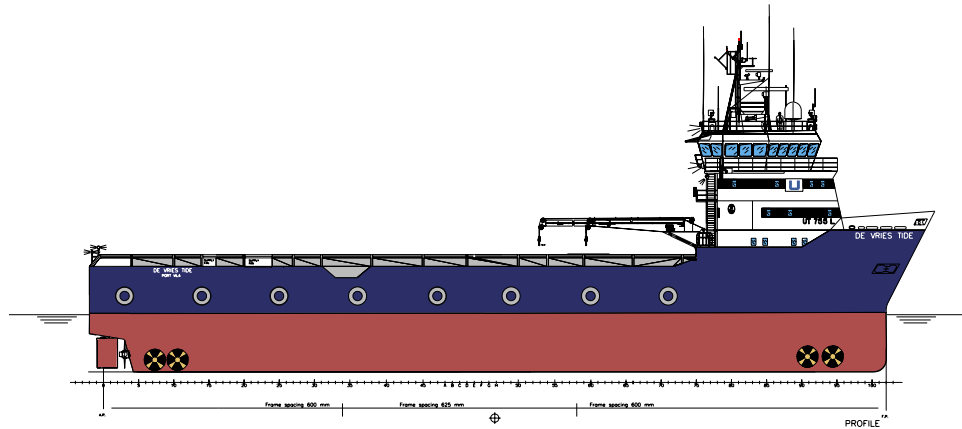


Ugelstad Management AS
Molovegen 3B
Glasshuset
N-6004 Ålesund
Norway
Tel: +47 70 10 26 60
Fax: 47 70 10 26 61
E-mail: post@ugelstad.net
www.ugelstad.net
Org.no. NO 984 534 752

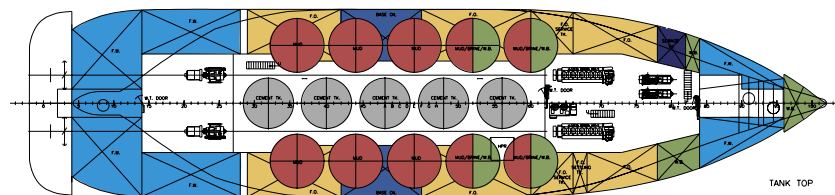


UGELSTAD MANAGEMENT AS

UT-design - UT 755 L - Platform Supply Vessel



- MUD
- F.O.
- W.B.
- F.W.
- SEWAGE
- BASE OIL
- CEMENT



MV DE VRIES TIDE

General:

The vessel is equipped for carrying and unloading to rigs and production platforms:

• Deck cargo • pipes • liquid cargo • cement/barite

Name: De Vries Tide
Built: Year 2002-28th June
Builder: Simek A.S. - Yard No. 106
Owner: Skipsaksjeselskapet S. Ugelstad
Manager: Tidewater Marine Inc.
Design: Ulstein UT 755 L
Type: Platform Supply Vessel
Classification: DNV + 1A1-SF-EO. IMO 469 A, Solas
Call sign: YJSN4
IMO: 9258143
Flag: Vanuatu
Port of registry: Port Vila

Dimensions:

DWT (MT): 3283T
Length OA: 71,90 m
Length PP: 66,80 m
Breadth moulded: 16,00 m
Depth main deck: 7,00 m
Draught loaded: 5,80 m
Draught minimum: 3,80 m
Dead weight: 3 283 T
Gross tonnage int.: 2150
NRT: 997

Cargo capacities (100 %):

Deck cargo: 1600 tonnes-abt
Deck area: 685,5 m² (51 x 13.5 m)
Fuel oil: 1048 m³ (100%)
Potable water: 840 m³
Brine: 390 m³ (2458 barrels)
Liquid mud: 977 m³ (6144 barrels) Tot. incl brine t.
Base oil: 204 m³ (1282 barrels)
Dry bulk cargo: 320 m³ (5 x 2250 cuft)
Ballast/drill water: 1345 m³

Washing machines in all OBM tanks

Discharge capacities:

Fuel oil: 1 x 150-200 m³/h at 90 mvc
Two Speed Pump
Ticket Printer Flowmeter
Fresh water: 1 x 150-200 m³/h at 90 mvc
Base oil: 1 x 150 m³/h at 90 mvc
Mud/brine: 3 x 0-75 m³/h at max 180 mvc
(freq. operated)
WB/DW: 150-200m³/h at 90 mvc
Couplings: 5" Weeco female.
Control: Ulstein Tanktender operation and monitoring system in engine control room with remote monitor in wheelhouse.

Propulsion:

Main engines: 2 x Bergen Diesel KRMB 9,9 syl.
2005 KW each at 825 RPM
Main gear: 2 x Ulstein/Kamewa gearbox type 600
AGSC-KP-500 ND generators.
2 x Stamford shaft generators type
HCM734, 1280 KW
Aux. engines: 2 x Volvo TAMD 183 A
with Stamford generator 260 KW each
1 x Valmet 320 DSG,
with Stamford generator 54 KW

Rudders:

Spade: 2 x Ulstein high lift flap rudders
Steering: 2 x Rolls-Reoyce Tenjford independent electric hydraulic steering gears

Side thrusters:

Forward: 2xKamewa/Ulstein electr. driven, 800 HP
Aft: 2xKamewa/Ulstein electr. driven, 700 HP

Deck, deck equipment and machinery:

Maker: Rauma Brattvaag
Deck length (tot): 51.25 m
Deck width (tot): 13.50"
Tot. free usable deck: 692 m²
Deck cargo: 1600 t timber sheeted 5 t/m²
frame 14-27:10 t/m²
Rails: 3 m high cargo rails internally plated with 11 safety access openings, port and starbord.
Guide rollers: 4 pcs each side main deck.
Cargo lashing/supp.: 22 pcs steel eye plates, braking load 10 tonnes.
8 pcs "D" rings working load 18 t.
Tugger winch: Twin 10 tonnes tugger winches with overload safety cut offs.
3 t, 10/16 meter.
Crane: Twin anchor windlass k 3 chain (38 mm 247.5 + 220 m.)
Twin cable lifters 12 t.
Anchors: Twin anchors type spek 0-18 m/min.
Capstans: Twin stern 8 t, 0-18 m/min

Bulk handling systems:

Maker: Rolls-Royce
Total capacity.: 320 m³ in 5 tanks
Compressor capacity: 2 x 22,7 m³ / min.
Working pr.: 5.6 BAR

Accommodation

Cabins: 12 single cabins for crew
2 x 4 man cabins for passengers
1 x 2 man cabins for passengers

Navigation equipment:

Radar, 10 cm.: Furuno arpa. FAR-2835 S
Radar, 3 cm: Furuno true motion. FR-2115
Navigator DGPS: Furuno DGPS GP-80 x 2
Echosounder: Furuno FE 700
Gyrocompass: Anschutz std 20 gyro
Autopilot: Anschutz with console and steering repeaters.
Windspeed: Wind meter deif 879
Speedlog: Furuno doppler ds 70
Joystick: 1 x Rolls-Royce type Poscon
Integrated man-chair: With all controls placed aft
Co-pilot chair: Co-pilot position placed at aft manoeuvre consoles with full controls of propellers and other important equipment.

Electronic chart:

Plotter: Telchart 2025 w. 21" color screen communication equipped to gmdss sea area

Communication equipment:

Radio mf/hf SSB: Furuno FS 1562-25
Digital selcall: Furuno DSC-6 A
VHF radiotelephone: 2 x Furuno FM 8700 simpl./dupl.
VHF portable: 3 x Jotron Tron
1 x Navtex, NX500
1 x Emergency Beacon freefloat epirb, Tron 40S
1 x Seacom B, Felcom 82B
1 x VHF, Furuno FM-2520 (Simplex)
1 x GSM Telephone W exchange and fax

Roll reduction system:

Roll red. tankers: 4xUlstein roll reduction tanks

Performance:

Trial speed at 4,0 m draught/ 2 x 2730 bhp. Approx. 14,5 knots



Rolls-Royce

UT-design - UT 755 L - Platform Supply Vessel



SIMEK AS
Shipyard - Newbuildings
P.O.Box 144
N-4401 Flekkefjord
Norway
Tel: +47 38 32 66 66
Fax: 47 38 32 66 99
E-mail: simek@simek.no
www.simek.no