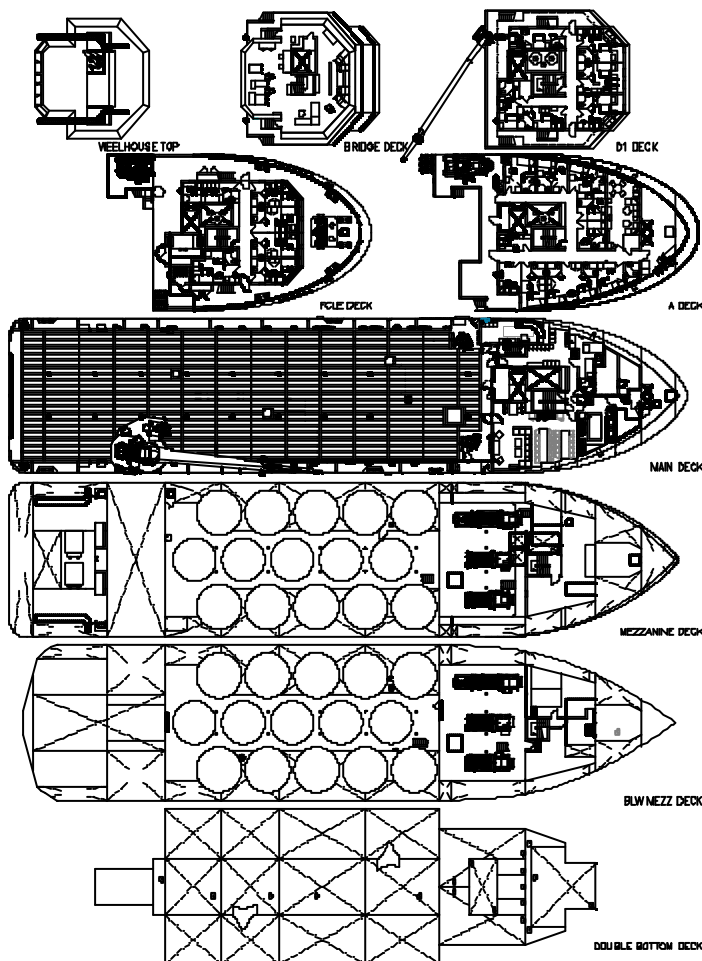




DP 2 diesel electric multi-purpose support vessel
for deep water operations

BOURBON HELENE

2,879 t deadweight



This GPA 670 ROV is designed in conjunction with Guido Perla & Associates of Seattle, Washington.

Environmentally friendly diesel electric propulsion uses less fuel than conventional direct drive systems and produces far less pollution.

Equipped with large accommodation and bulk capacities this vessel has a 2,000 m depth heave compensated crane and twin ROV power supply.

These features enable the vessel to perform light intervention work.

The fully redundant dynamic positioning class II gives her an exceptional maneuverability.

12-04-2007



BOURBON



BOURBON HELENE

Diesel electric
Low emissions
Dynamic positioning II

MAIN CHARACTERISTICS

Length overall:73.20 m
Length between Perpendicular:70.76 m
Beam:16.50 m
Depth:6.80 m
Operating Draft:5.30 m
Maximum Draft:5.50 m
Deadweight Max Draft:2,879 mt
Gross Registered Tonnage:approx 2,300

REGISTRATION

Type:Multi-purpose supply vessel, GPA 670 ROV.
Owner:Bourbon Offshore.
Year built:2006.
Builder:Zhejiang China.
Flag:French.
Classification: BV +HULL, +MACH Unrestricted Navigation,
Supply Vessel/Oil product, Fi-Fi I, Water spray, + AUT-UMS,
+ DYNAPOS-AM-AT-R.

PERFORMANCE

Speed at 5.3 m design draft/100% MCR:13 knots

ACCOMMODATION

- Fully air-conditioned.
- Accommodation for 40 persons composed of:
 - 6 x single cabins,
 - 11 x 2 men cabins,
 - 3 x 4 men cabins,
- 1 hospital, galley, provision room, stores, 1 mess room, 2 day rooms, 1 client office.

PROPULSION - MACHINERY

MACHINERY

- **Main diesel generators:**
 - 3x 1,825 kW (2,501 hp) CUMMINS QSK 60, at 1,800 rpm, 440 V/60 Hz.
- **Main propellers:**
 - 2x KAWAZAKI KST-200 ZF/A.
 - Z drive propellers, 360 degrees azimuthing, fix pitch, 1,200 rpm powered by full range variable speed motors.
- **Drives:**
 - 2x 1,920 kW, ABB 24 pulses frequency converters 690 V.
- **Emergency generator:** 1x 170 kW (228 hp) 440V/60Hz.

THRUSTERS

- **Tunnel bow thrusters:** 2x 746 kW(1,000 hp) CPP at 1,200 rpm. KAWASAKI KST 105 B3.

DECK EQUIPMENT

- **Tugger winches:** 2x 10 mt pull.
- **Deck /Subsea crane** (Active heave compensated).
 - 12 mt @ 18.5 m, 9 mt @ 24 m,
 - Depth reach 2,000 m.
- **Deck cargo crane:** (knuckle-telescopic boom),
 - electro-hydraulic, 3 mt @ 16 m.
- **Life boat:** 1x MOB boat with davit, life rafts with equipment.
- **Anchor Windlass:** 1.
- **Capstans:** 2x 8 mt each.
- **Roll reduction System:** 1 Roll Stabilization Tanks.
- **Fire fighting system (class I):**
 - 2 pumps 1,500 m³/h.
 - 2 monitors 1,200 m³/h each.
 - Water spray system, 720 m³/h .
- **Vessel equipped for ROV operation:**
 - Foundation for 2 ROV.
 - Power units: 2x 500 kVA/440 V.
 - 2 removable bulwark/rail (L= 6.10 m) each.
 - Pre-cable video & communication bridge to deck.
 - DP follow ROV mode.
- **Deck strengthened for:** 1x 150 mt A-Frame and 1x 150 mt line pull double drum electro-hydraulic winch.
 - A-Frame: 10 m clear width between support, 8 m clear height above main deck.

CAPACITIES

Cargo deck area: (5 mt/m²) (50,30x13,70 m).....675 m²
Deck cargo: (at 1 m CG).....1,600 mt
Ballast/Drill water:759 m³
Ship service ballast: (100% full).....407 m³
Ballast/Drill water max: (100% full).....1,831 m³
Fuel oil perm: (96% full).....973 m³
Fuel oil max: (96% full).....2,043 m³
Fuel oil service: (96% full).....40 m³
Fresh water:579 m³
Bulk Mud: (4 tanks).....255 m³
Liquid product : (2.5 max density).....1,072 m³
Base oil:188 m³
Sewage:11.50 m³
Gray water:12 m³

CARGO DISCHARGE PUMPS

Fuel oil :150 m³/h at 90 m.
Fresh water:150 m³/h at 90 m.
Liquid product :2x 75 m³/h at 150 m.
Base oil:150 m³/h at 90 m.
Bulk material:2 compressors rated for 50 mt/h at 60 m.
Drill water:150 m³/h at 90 m.

ELECTRONICS

- 1 joystick system for DP2 system,
- 2 radars,
- 3 gyrocompasses,
- 1 echo sounder, 1 speed log,
- 1 Inmarsat F 77 providing phone, fax, E-mail,
- 1 Iridium,
- 1 autopilot,
- 1 EPIRB, 2 radar transponders,
- 1 GPS,
- 5 UHF, 2 VHF,
- 1 radio system compliant with GMDSS A3 rules.

DYNAMIC POSITIONING SYSTEM (Class II)

- 1 Kongsberg DP system comprising:
 - 2 operating consoles,
 - 1 computer with 1 printer,
 - 2 wind sensors ,
 - 3 gyrocompasses,
 - 1 laser reference Fanbeam system,
 - 2 DGPS,
 - 2 Vertical Reference Units acoustic positioning,
 - 1 HiPaP 500.

CONTROL & SAFETY

- Fully integrated DP/control dual redundant system,
- Alarm, monitoring and control system for unattended machinery operation,
- Tank level measurement,
- Remote control & monitoring of main cargo systems.
-

(All particulars believed to be correct but not guaranteed).

Bourbon Offshore

148, rue Sainte - 13007 Marseille - France

Phone +33 (0)4 91 13 08 00 - Fax +33 (0)4 91 13 08 61

www.bourbon-online.com - E-mail: bourbon-offshore@bourbon-online.com