



**GENERAL**

Flag	Dutch
Port of Registry	Breskens
Built / yard nr	1982 /178
Construction yard	Ulstein Hatlo/ Ulsteinvik
Official nr	1256
IMO Nr	8107177
Class	DNV 1AA SF EO Dynapos-AUTR
ERN	93.93.56

**PRINCIPAL DIMENSIONS**

Length Overall	78.30 m
Length B.P.P.	72.70 m
Beam moulded	17.50 m
Depth	7.30 m
Maximum draft	4.98 m
Summer freeboard	3.60 m
Keel to topmast	27.20 m
GT / NT	2770 / 831 t
Deadweight	2775 t

**MACHINERY & PROPULSION**

Main Engine	2 x Bergen V12
Main Engine Output	2 x 3060 @820 rpm
Generator eng type	3 x Cummins
	2 x Shaft generators, 1 deck gen set.
Generator Output	3 x 305 Kva
Bollard pull	50 t
Bollard pull side	21 t side thrust (4 thrusters - 2250 kW)
Propulsion	2 x Ulstein C/P Propellers
Stern Thruster	2 x Ulstein 590 kW
Bow Thruster	2 x Ulstein 590 kW

**PERFORMANCE / FUEL CONSUMPTION**

Transit speed 12- max14 knots	14- 17 mt / day
Eco speed 10.5 knots	10 mt / day
DP mode	8-12 mt / day
Port Idle	0.5 mt / day
Consumption in full DP mode ,subject to environmental conditions	

**TANK CAPACITIES**

MGO	964 mt
Fresh water	556 mt

**ACCOMMODATION / OFFICES**

Accommodation	Max 50 ( Safety equipment up to 56)
Crew	22 crew
Charterer	28 beds
	13 double cabins
	2 single rep cabins with office

Survey corner	On bridge
---------------	-----------

**DYNAMIC POSITIONING**

DP class	DP 2
System	Kongsberg SIMRAD SDP-21
HPR	SIMRAD HIPAP 350
MRU	2 x Seatex MRU-2
DGPS	1 x DPS200S + 1 x DPS112 (multi differential)
Taut wire	LTW Bandak MK 15
DP Interface	available
Cy-scan	yes

**NAVIGATION EQUIPMENT**

Navtex 1	yes
VHF Direction Finder	yes
Gyro Compass 3	Plath
Automatic Pilot	yes
Joystick Manoeuvring System	yes

**COMMUNICATION FACILITIES**

Satelite communication	2 x KVH 56(2048/5'
GMDSS	A1, A2 & A3

**DECK EQUIPMENT & SERVICES**

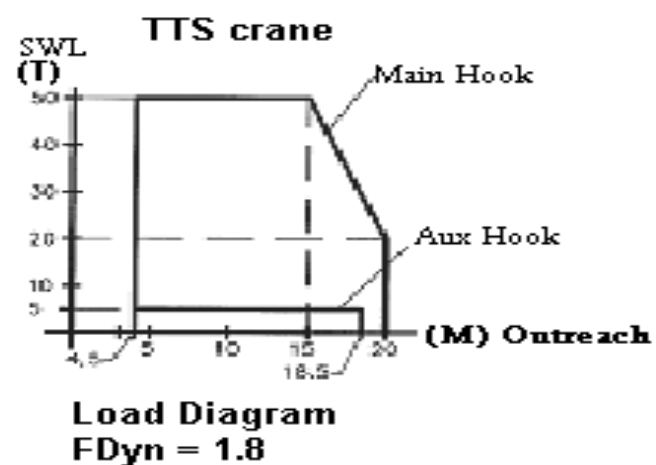
Clear Deck Space	41.6 m x 15 m
Deck strength	5 mt /m2
Moon / survey Pool	1 x Circular 600 mm diameter

**POWER CONNECTIONS**

Deck max power	400 AMP
Electrical connections	24 pcs total, 12 each side
4 pcs( 4 pins, 3phase + earth)	440V-60hz, 63 Amp, max 400 amp
4 pcs ( 4 pins, 3phase + earth)	380v 60 hz 32 Amp max 160 amp
4 pcs ( 2pins, 2 phase + earth)	230V-60 hz 16 Amp max 80 amp

**LIFTING FACILITIES**

Deck crane SB	TTS Knuckle boom
Main hoist	50 t @4,5 - 15 m knuckle boom type
Max outreach	20 m
Wire length	485 m
Aux hoist	5 mt @ 18.5 mt
Wire length	443 m
Hydra lift SB (store & provisions)	5 t @7 m telescopic
Effer crane PS midship	SWL 1.5 mt



This technical specification sheet is subject to change without notice. Whilst every effort has been made to ensure the accuracy of the information presented, no guarantees of accuracy can be given. For enquiries, kindly email us at [chartering@nl.vroonoffshore.com](mailto:chartering@nl.vroonoffshore.com).