

Our Fleet

Global 1200

[DP2 heavy lift and pipelay vessel

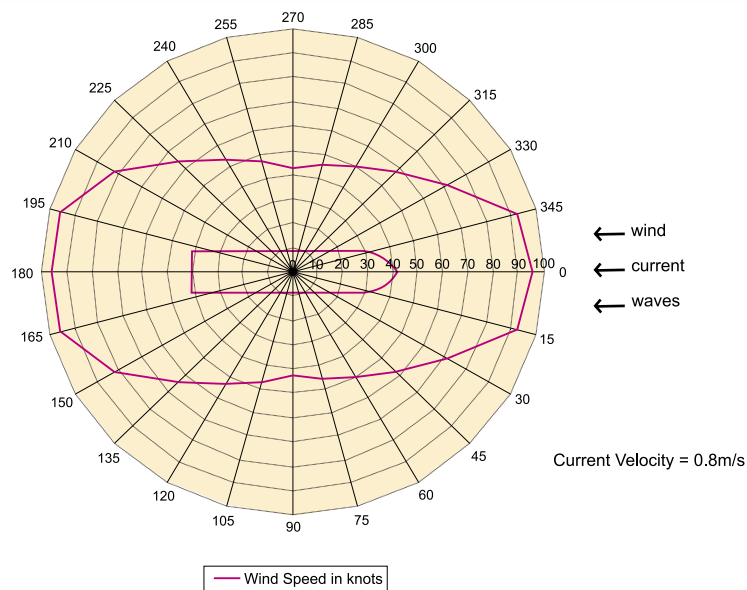


Technip
take it further.®

Global 1200



Global 1200 DP Plot



Global 1200 is equipped with enhanced DP2 system for large diameter pipelay where high bottom tensions are required or in congested fields. For very shallow water, 8 m (25 ft.) to 23 m (75 ft.), the Global 1200 can deploy an eight point conventional mooring system with the thrusters retracted to allow access to non DP water depths.

Specifications

Type DP Pipe-Lay/Derrick Construction Vessel
Classification ABS
Notation ABS ✕ A1-Derrick/Pipe Laying Vessel
(E) ✕ AMS ✕ ACCU ✕ DPS-2 Self-Propelled
Registry (Flag) Vanuatu
Year Built 2010
Transit Speed 15 Knots
Endurance (Days) 45/35 Pipelay

Principal dimensions

Length (Moulded) 162.3 m
Breadth (Moulded) 37.8 m
Depth (Moulded) 16.1 m (To main deck)
Operating Draft (min/max) 5.8m/6.6m

Dynamic positioning

- DP Classification DP2 with the main features of DP3
- DP System CONVERTEAM
- Reference Systems (3) Gyros (3) Wind sensors, (2) DGPS,
(3) VRU, (2) Taut Wire, (1) Hydrophone,
(1) Cyscan Laser Reference System

Heledeck

- Helideck Rating Suitable for Sikorsky S61-N and Super Puma
- Helideck Size Octagonal D=23M, t=9.6

Power and propulsion

Main Engines/Generators

- Make MAN
- Numbers (7)
- Main Power (3) 4409 kW; (3) 3919 kW
- Emergency Power (1) 1000 kW
- Thrusters Make/Model Wartsila/LIPS
- Numbers 8 Total
Propulsion and DP (2) 4500 kW Azimuth
DP (5) 2400 kW Azimuth, Retractable
(1) 880 kW Tunnel

Vessel capabilities

- Maximum displacement 32,000 MT
- Light ship weight 21,400 MT
- Variable Deck Load 4,000 MT
in addition to 80% consumables
- Deck Capacity 10 MT/Sq. Meter
- Free Deck Area Approximately 2,800 Square Meters
- Fuel Oil 2285 MT
- Fresh Water 1435 MT
- Ballast Water 11,280 MT

Accommodations

- Comfort class living quarters For 264 people
- Hospital Beds (2)
- Gymnasium, Internet Café, Recreation Room with Movie theater and Satellite TV.

Navigation

- Gyro Compass, Dual axis Doppler speed logs, Auto-pilot, ARPA, Radars and GPS

Communication

- (2) VSAT, VHF Radio, GMDSS and SSB Internal Telephone, PA/GA system and Broadband internet with WiFi

Cranes

- Main Crane Make/Model AmClyde/PC-37
- Type Post Crane/Revolving
Main Fixed 1200.0 MT @ 32.0m radius
Main Revolving 900.0 MT @ 32.0m radius
Auxiliary 350.0 MT @ 60.0m radius
Whip 60.0 MT @ 89.0m radius
- Pipe Handling Crane(s) Make/Model AmClyde/MSB-12
Type Pedestal Crane/Revolving
Capacities
Main 40.0 MT @ 35m radius
Aux 9 MT @ 54m radius

Pipelay systems

- Pipelay Method S-Lay
- No. of Work Stations (10) Single Joint Suitable for Pipe-in-Pipe
& Piggy back pipeline
- Pipe Diameter (min/max) 4 in/60 in

Tensioners

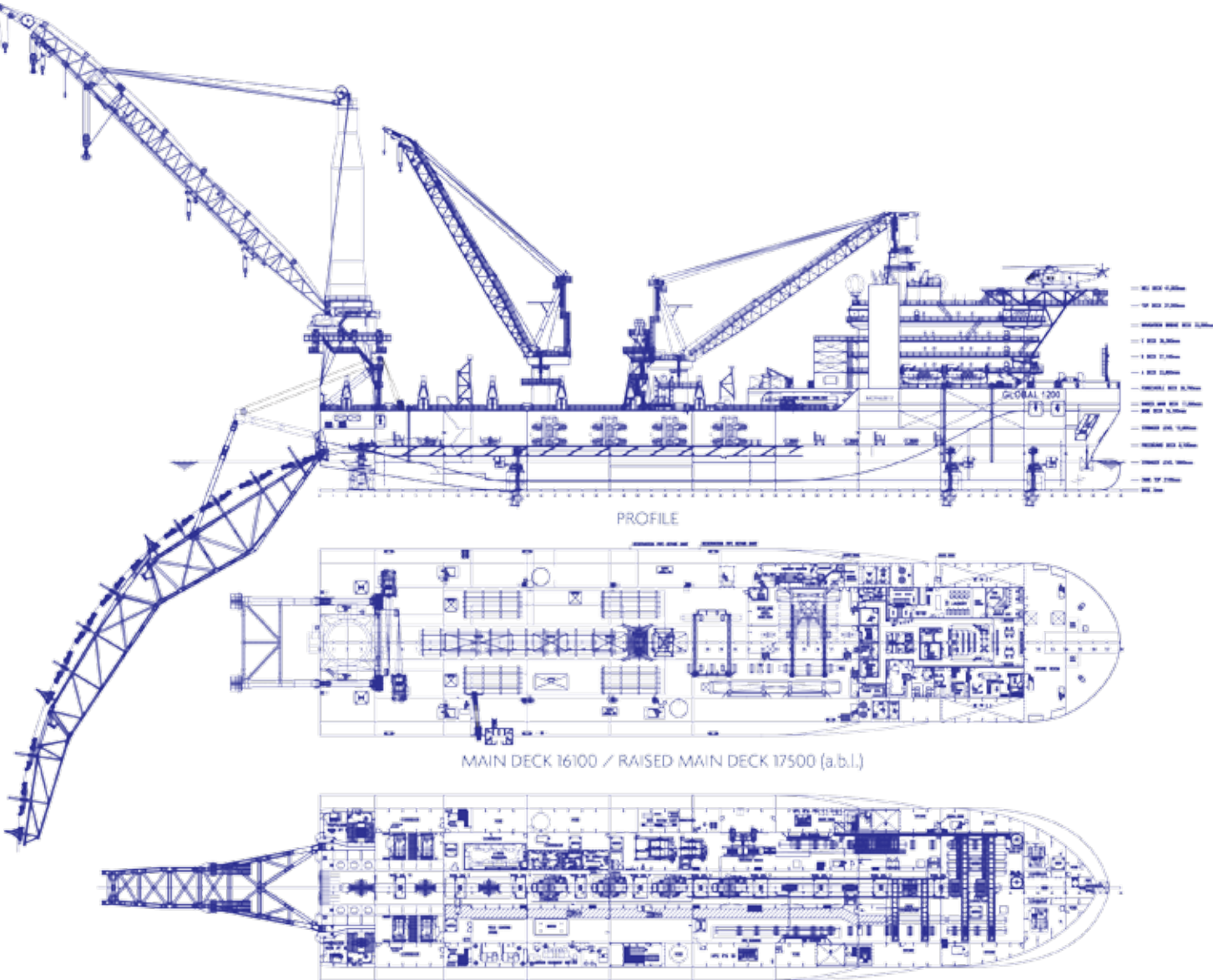
- Total Tension 500 MT (Nominal)/640 MT (Max.) with 4 Tensioners
Tensioners Make/Model RE.MAC.UT/Vertical two track, Electric.
Tensioners No (3) + (1) Optional
Tensioner capacity 125 MT (Nominal)/160 MT (Max.) each
- Pipeline Abandon & Recovery/Deepwater Lowering System
Winch Make/Model AmClyde/TW-425/250
Type Traction
Numbers (1) With Optional 2nd for Deepwater lowering
Capacity 400 MT (800 MT with Optional 2nd for
deepwater lowering)
Wire rope (Length/Diameter) 3000m/108mm
3000m/64 mm
- Pipe Davits
Type Portable
Number of Davits (6)
Capacity 50 MT each

Conventional Anchor Winches

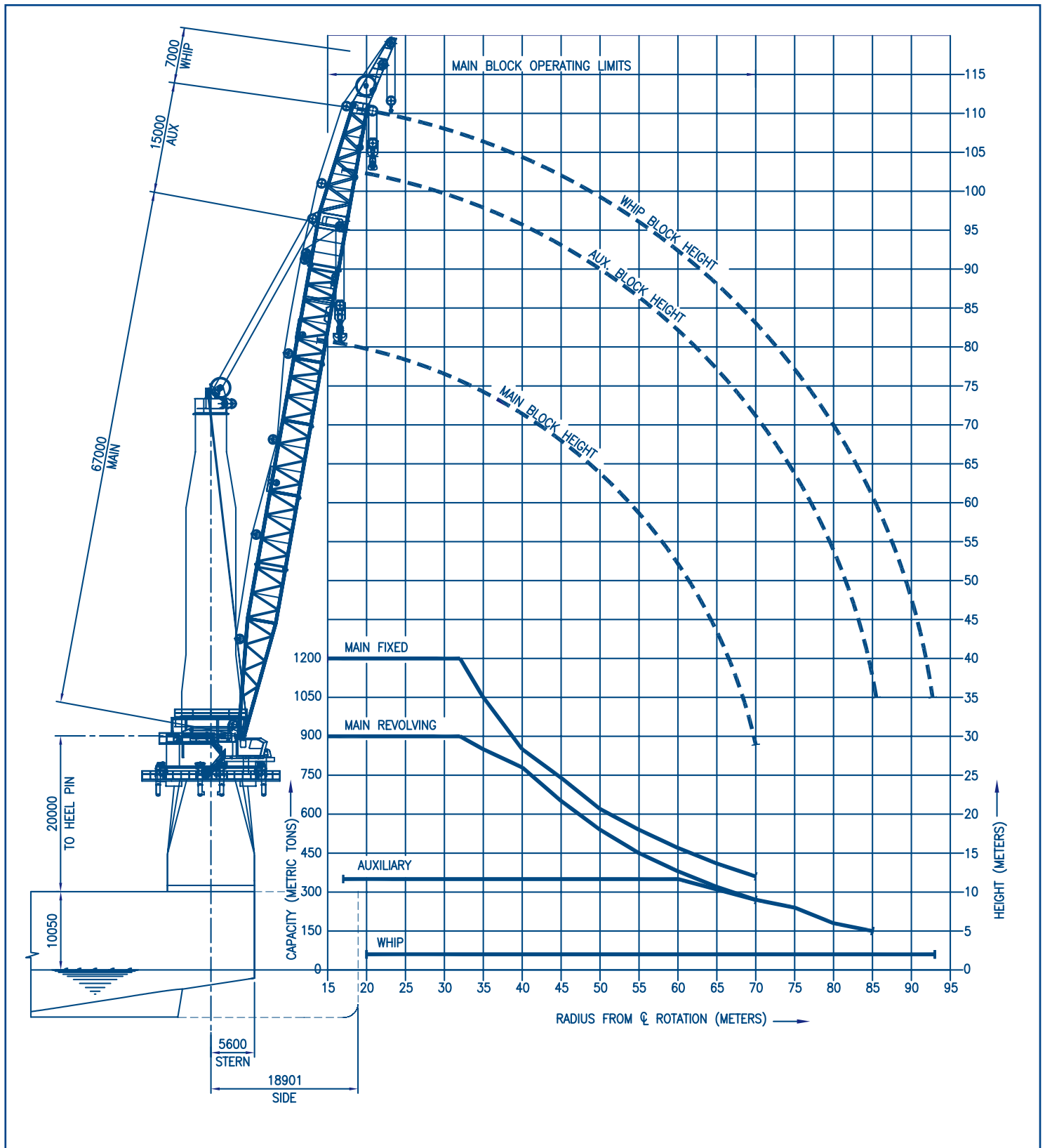
- Winch Make/Model Skagit/AED 285
Type Single Drum/Electric (Modified)
Numbers (8)
Capacity 75 MT Line Pull
Wire rope (Length/Diameter) 1000m/64mm

Stinger

- Deepwater Stinger (3) sections, 90° Departure Angle
Type Fixed, displacement controlled
Length 105.2 m
- Shallow water Stinger (1) section
Type Fixed Cantilever support
Length 38.5 m



Global 1200 proves its versatility. Suitable for deep and shallow water projects with state-of-the-art systems, DP capability and conventional mooring system.



The Global 1200 is a next generation multi-purpose DP2 construction vessel with main features of DP3. Designed for work in both deep and shallow water, the vessel incorporates a state-of-the-art pipelay system capable of operating up to 3,000 m water depth and handling up to 60 inch OD concrete coated pipe. The vessel also incorporates a 1200 MT capacity crane suitable for conventional platform installations. The Global 1200 has a deepwater lowering system also capable of operating up to 3000 m water depth with A&R winch capacity of 400 MT + additional capacity to perform lowering operations of up to 800 MT. The Global 1200 offers transit speeds up to 15 knots for swift mobilizations to work destinations across the globe. As a new build vessel, the Global 1200 provides the latest technology in DP system/mission equipment along with high standards in living accommodations and represents Technip's strong commitment to expanding its high quality fleet.



HEADQUARTERS

Technip

89 avenue de la Grande Armée

75773 Paris Cedex 16

France

Phone: +33 (0) 1 47 78 24 00

Technip USA, Inc.

11700 Katy Freeway - Suite 150

Houston, Texas 77079 - USA

Phone: 281-870-1111

www.technip.com